

# Nevis Pipeline Products, LLC.

## Series A Quick Opening Closure

**Nevis Pipeline Products, LLC**, based in Houston Texas, is recognized for supplying high quality, specialty pipeline equipment used within the Oil and Natural Gas Pipeline Industry.

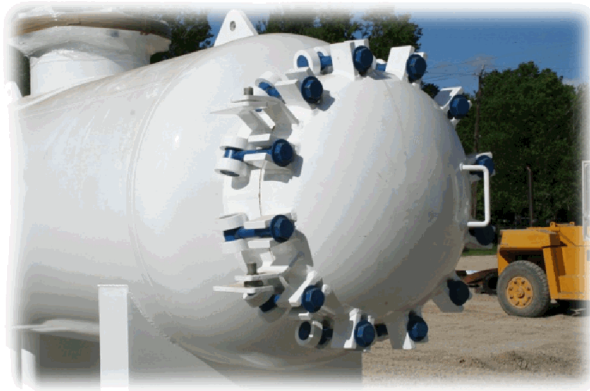
The Series A range of Closures provide a simple and economical solution for applications requiring quick access to vessel internals and where the system operational pressure is relatively low.

Series A Closure are based around the use of pivoted or swing bolts that are arranged around a Welding Hub to secure the removable door in position. For added integrity and security, the Series A Closure incorporates the use of robust cadmium plated ASME B7 bolting as standard.

Nevis Pipeline Products manufactures two styles of Low Pressure Closures. The Series AD incorporates the use of a 2:1 semi ellipsoidal head and is best suited for larger diameter applications. The Series AD can be provided in a 'double ring' configuration for specialty and higher pressure applications

The Series AF adopts the use of a simple flat door and is best suited for small diameter, low pressure applications and custom alloy applications such as strainers and filter housings.

Closures are supplied with a complete documentation package including dimensional drawing, supporting design calculations, material test certificates and, when requested ASME documentation



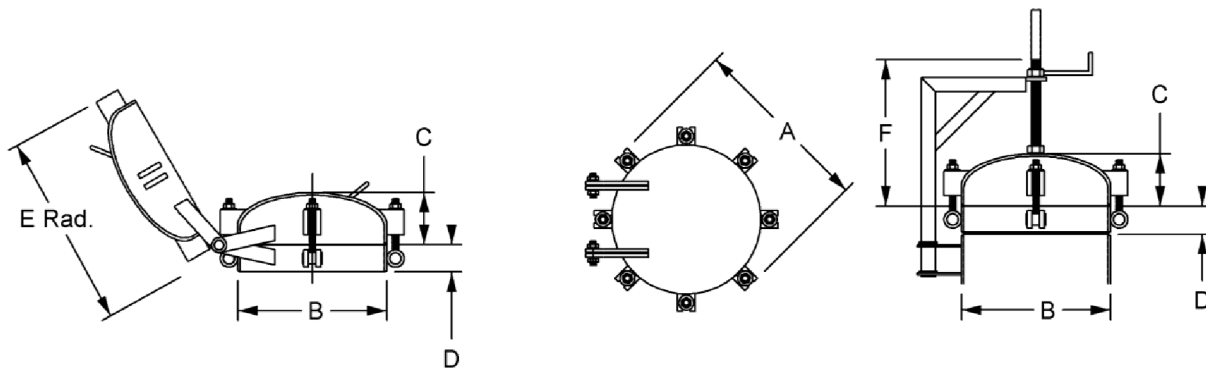
### ***Product Examples***



# Nevis Pipeline Products, LLC.

## Series A Quick Opening Closure

### Swing Bolt Style Closure – Series AD



Nom Size	A	B	C	D	E	F	Approx Wtg. LBS
6	10.5	6.625	3.5	3	12.5	n/a	50
8	12.5	8.625	4	3	14.5	n/a	60
10	14.75	10.75	4.5	3.25	16.625	n/a	70
12	16.75	12.75	5	3.5	18.625	n/a	80
14	18	14	5.25	4	20	n/a	95
16	21.25	16	5.75	4.5	22.5	22	110
18	23.75	18	6.25	4.5	25	22	130
20	25.25	20	6.75	4.5	26.5	23	155
22	27.5	22	7.25	4.5	28	23	165
24	29.5	24	7.75	5	30.5	24	200
26	31.5	26	8.25	5	32.25	24	245
28	34.5	28	8.75	5	35	24	270
30	36.5	30	9.315	5.5	37	26	360
36	42.5	36	10.625	5.75	44.5	27	510
42	49.5	42	12.125	6.75	49	28	720
48	54.5	48	13.625	6.75	54	30	900

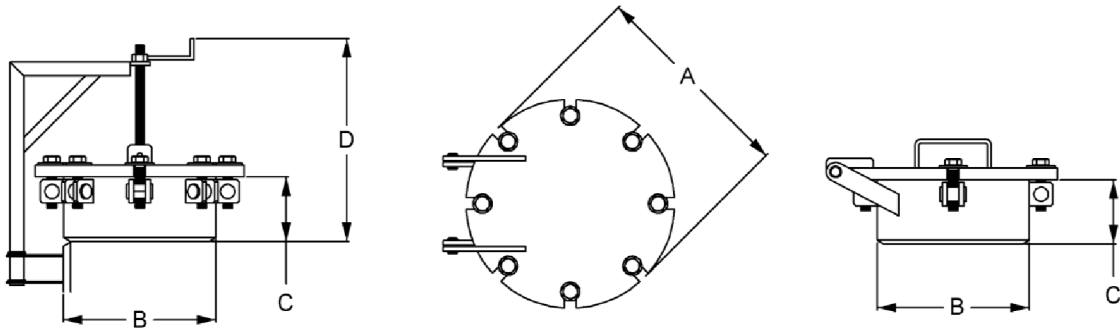
#### Standard Feature

- Viton Seal
- CAD Plated bolting
- ASME VIII Code
- Weld bevel to match Std. Wtg. pipe

# Nevis Pipeline Products, LLC.

## Series A Quick Opening Closure

### Swing Bolt Style Closure – Series AF



Nom Size	A	B	C	D	E (swing rad.)	Approx Wtg. LBS
6	11 1/2"	6 5/8"	3 1/2"	Hinged	12 3/4"	54
8	13 3/8"	8 5/8"	3 1/2"	Hinged	14 1/2"	66
10	15 5/8"	10 3/4"	3 3/4"	Hinged	17 1/8"	80
12	18 1/8"	12 3/4"	4"	Hinged	19"	92
14	19 1/4"	14"	4 1/2"	20"	20 7/8"	118
16	23 1/4"	16"	4 1/2"	22"	23 1/4"	145

#### Standard Feature

- Viton Seal
- CAD Plated bolting
- ASME VIII Code
- Weld bevel to match Std. Wtg. Pipe
- Design pressure 150 psig at 100 deg F
- Hinged design standard
- Davit for vertical installation optional

# Nevis Pipeline Products, LLC.

## Series A Quick Opening Closure

### Design Features

The Series A range of Low Pressure Closures consists of a 2:1 semi ellipsoidal cap that is hinged to a welding hub. The cap is secured to the welding hub by a series of high strength CAD plated eyebolts that are pinned with lugs and clips to the main assembly. A standard section 'O' ring mounted within the cap completes provides positive sealing between the cap and welding hub.

### Operating Principle

The Series A Low Pressure Closures operates on a simple swing bolt basis. After depressurization of the vessel and verifying that it is safe to proceed, removal of the cap is simply performed by the loosening of the retaining bolts such that they clear the retaining lugs and are able to 'swing' out of position.

### Safety

Safety is inherent to the Series A range of closure. Cap retaining lugs are angled at an angle of approximately 10 degrees requiring the retaining bolts to be loosened an extra turn before become free to swing from position. If operated in an unsafe fashion, the presence of internal pressure will cause the cap to lift slightly but while still retained by the lugs thereby alerting the operator.

### Hinge / Davit

Horizontal closures are supplied with a heavy duty side mounted hinge arrangement incorporating stainless steel bolting and self lubricating bearings for extended operating life. Vertical closures are either supplied as hinged (6" – 14") or with a davit arm assembly (16" and larger) that is designed to fully support the weight of the cap.

### Sealing

Sealing of the Series A Closure is by virtue of high quality O-ring seal. Standard seal grade adopted is Viton® A but supply of either Nitrile / Buna N, Teflon®, EPBM, HNBR and Silicone is available on request.

### Design Code

The Series A is designed using the base rules of ASME VIII Div 1. The weld end termination can be supplied to match the applicable vessel design code and options include ANSI B31.3, B31.4 & B31.8.

### Materials of Construction

Standard materials are ASTM specifications as permitted by the ASME VIII Code. Standard materials are carbon steel and stainless steel (304 & 316 grades). HIC materials for amine and sour service applications are available upon request.

### Optional Features

The Series A Low Pressure Closures are available with the following options:

Vent	½" and ¾" NPT & SW vent connection available upon request.
Specialty design	For thin walled, stainless steel or lined vessel applications, the closure cap can be furnished in a 'flat top' arrangement and with the option of the weld termination being furnished as either butt weld or socket weld. This arrangement enables the seal to be located as a 'face seal' providing greater flexibility to accommodate vessel fabrication.

**Nevis Pipeline Products, LLC**  
PO Box 2088, Tomball,  
Texas, 77377, USA  
Tel# 832-632-4450  
Fax# 281-255-9330  
Email: [contact@nevisenterprise.com](mailto:contact@nevisenterprise.com)  
[www.nevisenterprise.com](http://www.nevisenterprise.com)